

FIRE/SMOKE DAMPERS - 5 YEAR WARRANTY

One Product - Multiple Applications

- Vertical walls.
 - UL 555 & 555S class II leakage rated.
 - 16" inch long, 20 gauge galvanized sleeve.
 - 1-1/2" hour (vertical & horizontal).
 - UL file #R11767.
 - C.S.F.M file #3225-0368:110 fire rated, 3230-0368:111 leakage rated.
 - Optional SSPF single sided retaining angle or loose flange (for use with air distribution).
 - All units available with optional round collars shipped loose.
 - All dampers supplied with Belimo 120 VAC (24 VAC available) actuators.
-
- 1 hour rating for tunnel type corridor ceiling construction.
 - UL 555 & 555S class II leakage rated.
 - 16" inch long, 20 gauge galvanized sleeve.
 - UL file #R11767.
 - C.S.F.M. file #3225-0368:110 fire rating, 3230-0368:111 leakage rating.
 - Optional SSPF single sided retaining angle or loose flange (for use with air distribution).
 - All units available with optional round collars shipped loose.
 - All dampers supplied with Belimo 120 VAC (24 VAC available actuators).
 - See optional available accessories.

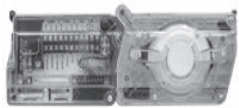


FSD-172 - Wall Application



FSD-172 - Corridor Ceiling Application

Accessory Reference



Smoke Detector - pg. 12



Actuators - pg. 9-10



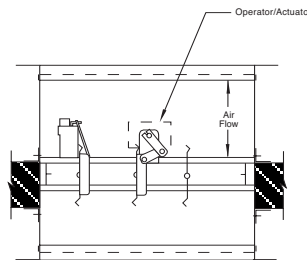
Access Doors - pg. 13-17



SSPF Angles - pg. 5



Quick Ship Program - pg. 2

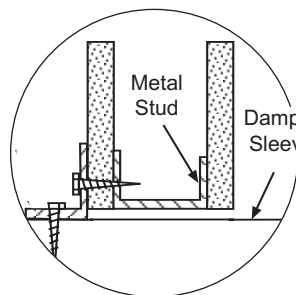


Horizontal Mount

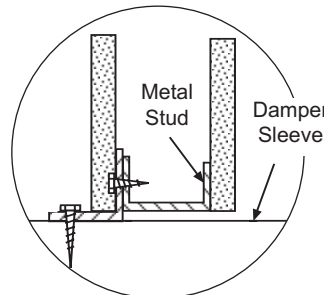
The Model FSD-172 is cross listed for installation in one and two hour rated walls for vertical mounting. It is also listed for installations in one hour rated tunnel corridor ceilings.

Size	Stock#	List Price
6"x6"	W-11694	\$531.00
8"x8"	W-11695	\$531.00
10"x10"	W-11696	\$567.00
12"x12"	W-11697	\$567.00
14"x14"	W-11698	\$639.00
16"x16"	W-11699	\$639.00
18"x18"	W-11700	\$678.00
20"x20"	W-11701	\$678.00
22"x22"	W-11702	\$721.00
24"x24"	W-11703	\$721.00

Single Mounting Angle Over Drywall



Single Mounting Angle UNDER Drywall * Metal Stud Only



Mounting Angles

SSPF Mounting Angles

Pottorff Air Product Sales's exclusive single-side mounting angle design only requires angles on one side of partition. The ingenious corner design allows this mounting system to install either underneath or on top of the drywall offering additional installation options and cost savings. Tested and approved in accordance with U.L. standard 555 this unique system is in full compliance with all building codes for wood stud, metal stud or masonry installations.