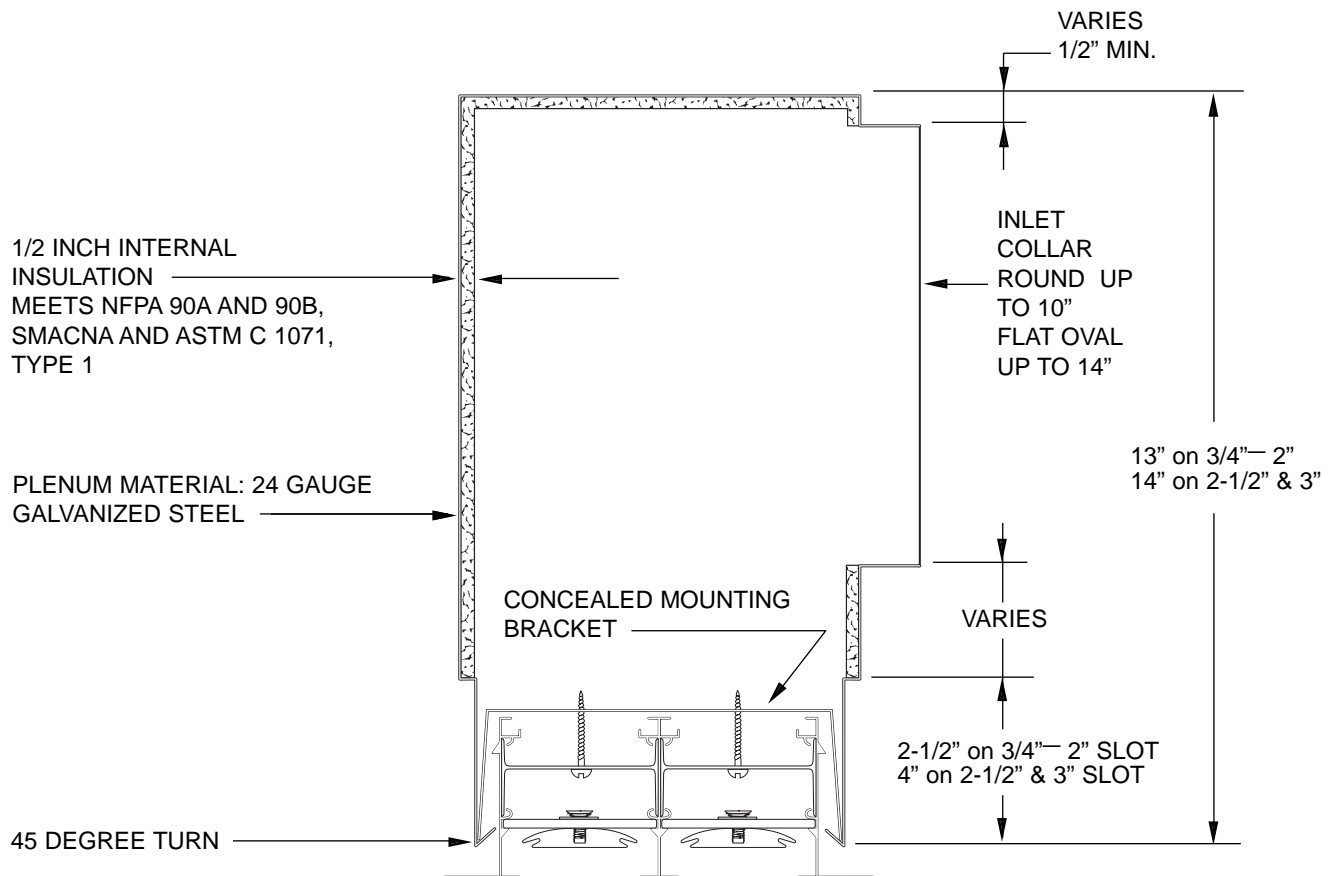


STANDARD PLENUM INSTALLATION DETAILS



CONCEALED MOUNTING

NOTE: CONCEALED MOUNTING

- Plenum shall have a 45 degree inward turn on the neck to accept the concealed mounting bracket.
- Mount the plenum in the location required, taking into consideration all local codes.
- Place the mounting bracket into the plenum as shown.
- Insert the linear product into the neck of the plenum.
- Insert the mounting screw through the linear by sliding the joiner mounted on the deflector to one side. Put the screw up to the mounting bracket. Tighten the screw to the desired height.
- Slide the joiner back over the opening and proceed to the next bracket.
- Linear can be installed through the face.