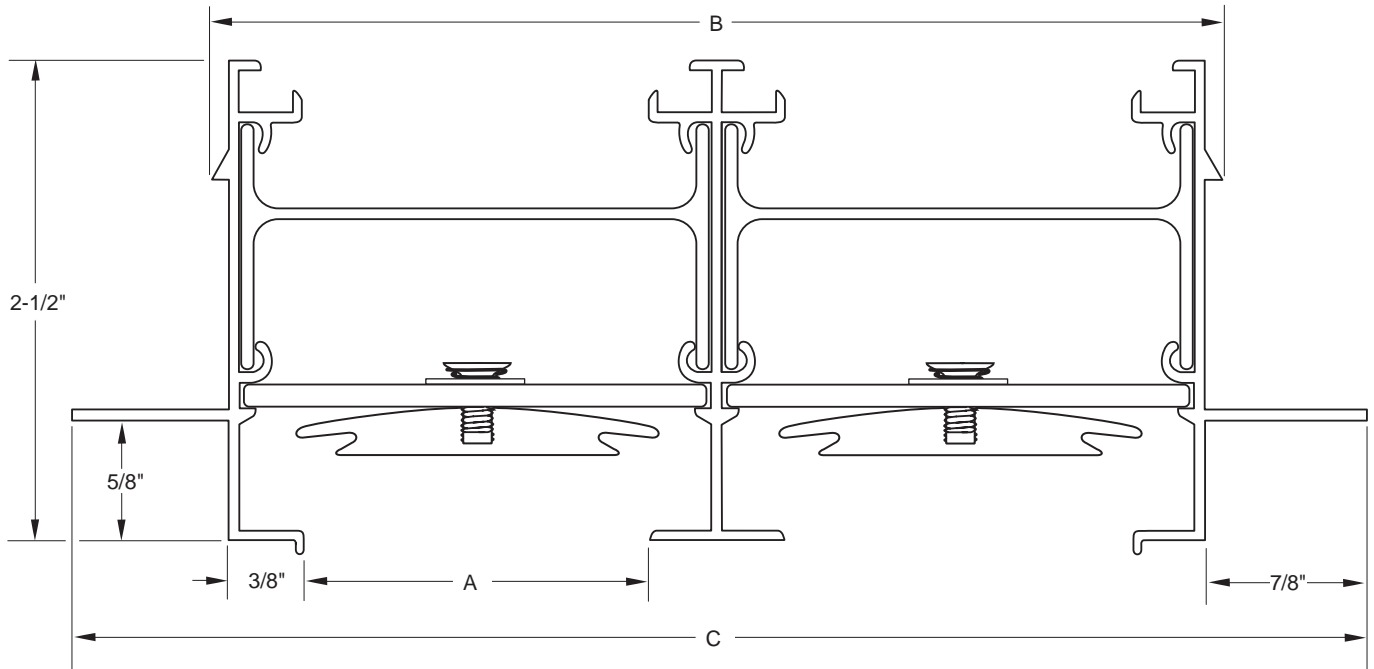


# DIMENSIONAL DATA 2 INCHES - MCS FRAME

FOR CONCEALED MOUNTING IN HARD SURFACES



| MODEL       | SLOT | A | B        | C        |
|-------------|------|---|----------|----------|
| 201-200 MCS | 1    | 2 | 2-15/16  | 4-1/2    |
| 202-200 MCS | 2    | 2 | 5-5/8    | 7-3/16   |
| 203-200 MCS | 3    | 2 | 8-5/16   | 9-7/8    |
| 204-200 MCS | 4    | 2 | 11       | 12-9/16  |
| 205-200 MCS | 5    | 2 | 13-11/16 | 15-1/4   |
| 206-200 MCS | 6    | 2 | 16-3/8   | 17-15/16 |
| 207-200 MCS | 7    | 2 | 19-1/16  | 20-5/8   |
| 208-200 MCS | 8    | 2 | 21-3/4   | 23-5/16  |

(Dimensions in inches)

**Note:**

- 1) See plenum details for various applications.
- 2) Diffuser neck supplied 1/4" undersize in overall length.
- 3) Sidewall application will be the same dimensionally.
- 4) Greater number of slots are available.
- 5) Normally supplied with butt style end caps.