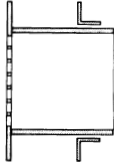
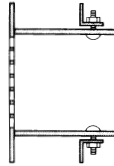


STAMPED GRILLES MODEL SGPR

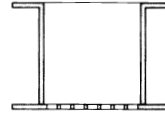
OPTIONS AND ACCESSORIES



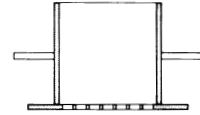
Option (a) : Separate Rear 1" x 1" x 1/8" Assembled Collar for Welding. Other Sizes and Gauges Furnished. Available All Models.



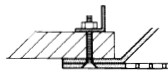
Option (b) : Separate Rear 1 1/4" x 1 1/4" x 1/8" Assembled Collar for Bolting. Other Sizes and Gauges Furnished. Available All Models.



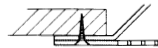
Option (c) : Bent Out Rear Flange. Available All Models.



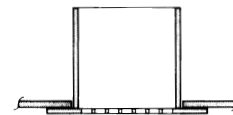
Option (d) : Masonry Rods or Tabs. Size, Length and Spacing as Required. Available All Models.



Option (e) : Rear Angle Ring with Nutsert for Bolting. Available for SD and All Grille Models.

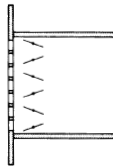


Option (f) : Countersunk Screwholes in Face with Tamper Proof Screws. Available All Models, Sidewall and Ceiling Grilles and Model SD.

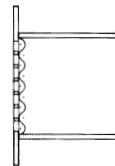


Option (g) : Weld Face Plate to Steel Bulkhead or Ceiling. Available All Models.

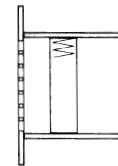
OTHER OPTIONS



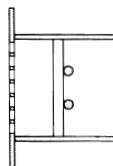
Option (h) : Opposed Blade Damper Face or Rear Operated. Available All Models.



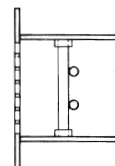
Option (i) : Heavy Woven Steel Screen. Standard on Most Models. Available All Models.



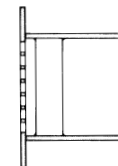
Option (j) : U.L. Fire or Smoke Damper Welded in Sleeve. Available All Models.



Option (k) : Standard Round 1/2", 3/4" or 1" Bars Welded to Sleeve and at All Crossings. Max. 6" Vertical, 12" Horizontal Centers. Standard SEG-7 and 10. Available All Models.

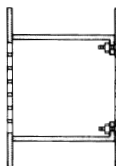


Option (l) : C-61 Rockwell Heat Treated. 1/2", 3/4" or 1" Round Bars in 2" x 1/2" Bar Sockets. Maximum 6" Vertical, 12" Horizontal Centers. Available All Models.

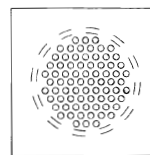


Option (m) : 2" x 3/8" Steel Bars on Close Centers Welded Behind Face Plate. Available All Grille Models.

ALTERNATIVE CONSTRUCTION



Option (n) : Matching Rear Plate with Weldnuts for Room to Room or Door Grille Transfer.



Option (o) : Round Sleeve, Round Rear Angle, Round Perforated Pattern in Square Face.

