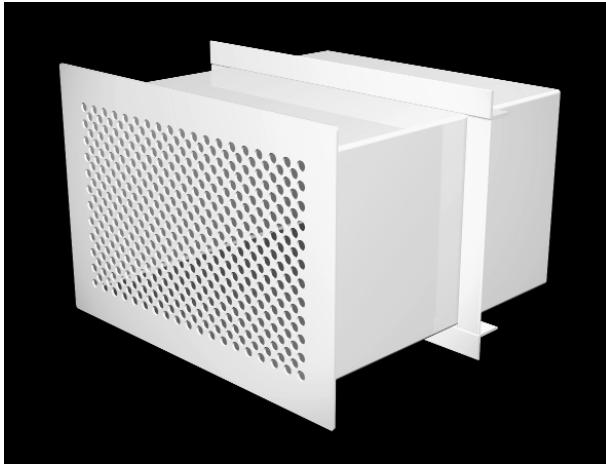


SECURITY GRILLES AND REGISTERS



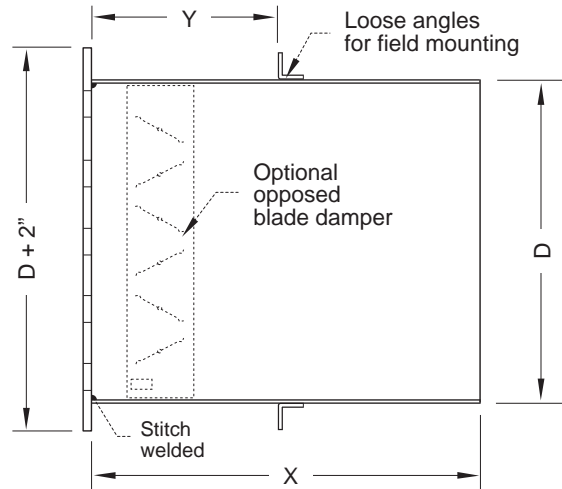
Model SGPR-S

OPTIONS

- Loose angles for field mounting various sizes and gauges. (STD. 1" x 1" x 1/8")
- Damper-face or rear operated.
- Heavier gauges for grille and sleeve.
- Added security screens and bars.
- Border widths of 1/2", 1-1/2" or 2".
- Various face patterns.
- 304 stainless steel or aluminum.
- Various sleeve lengths.

STANDARD CONSTRUCTION

- Face plate: 14 gauge steel with 5/16" diameter holes on 7/16" (46% F.A.) staggered centers stitch welded to sleeve.
- Sleeve: 12 gauge steel with stitch welded seams, 12" length.
- Finish: white enamel.



GAUGE	HOLE DIAMETER & SPACING		
	3/16" x 1/4"	1/4" x 3/8"	7/16" x 11/16"
14	Y	Y	Y
12	Y	Y	Y
10	Y	Y	Y
3/16"	N/A	N/A	Y

QTYS.	SIZE	SLEEVE LENGTH	GAUGE	
			Sleeve	Face